



THE GRANDVIEW

See Reverse Side
for Floor Plans

- 1½ story on an unfinished basement with 2 bedrooms/2½ bathrooms and a loft
- 1,658 heated square feet, 1,884 unheated square feet
- An optional finished basement adds 1 bedroom, bath, family room, and 871 heated square feet
- Covered porches
- Open decks
- 6x12 Logs on main level with a 30 Year Manufacturer Warranty
- Cedar shake siding or board and batten on second level
- Optional stacked stone on foundation
- Ventless gas fireplace
- Many interior finishing options are available

Look out the window or step out onto the porch to enjoy Pisgah Preserve's many stunning views ...



PRESERVATION IS YOUR PERMANENT NEIGHBOR

©2008 Pisgah Preserve

The Grandview - updated 9/5/08

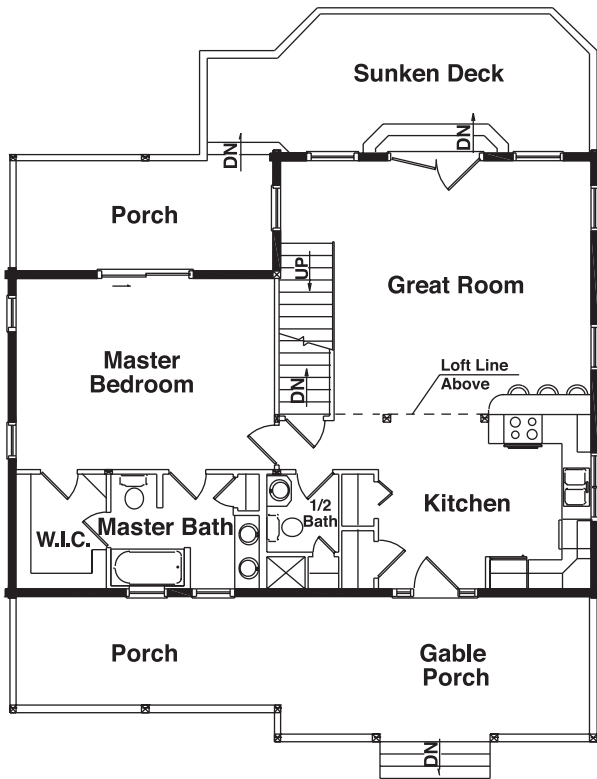


Pisgah Preserve
AT LAKE JAMES

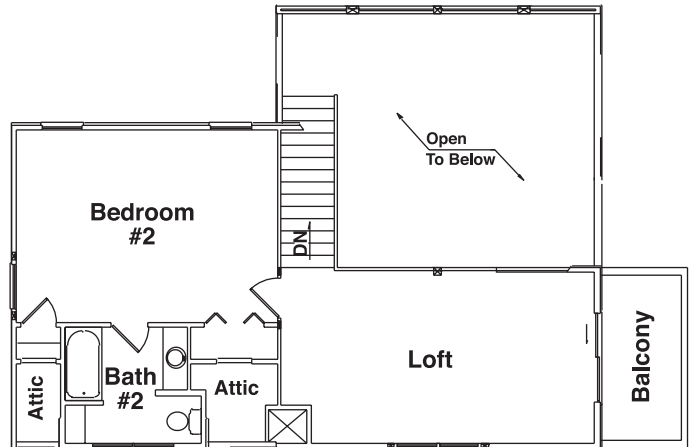
Post Office Box 9148 • Morganton, NC 28680

828-448-1473 phone • Email: info@pisgahpreserve.com • www.pisgahpreserve.com

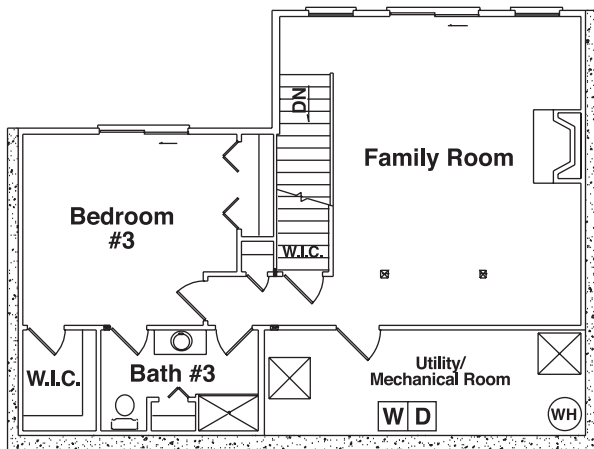
1st Floor Plan



2nd Floor Plan



Optional Basement Floor Plan



THE GRANDVIEW

Square Foot Totals

1st Floor = 1,056 ft²

2nd Floor = 602 ft²

Optional Basement = 871 ft²

Total Heated ft² = 2,529 ft²

Unfinished Basement = 185 ft²

Deck = 246 ft²

Porch = 508 ft²

Balcony = 74 ft²

Total Unheated ft² = 1,013 ft²