

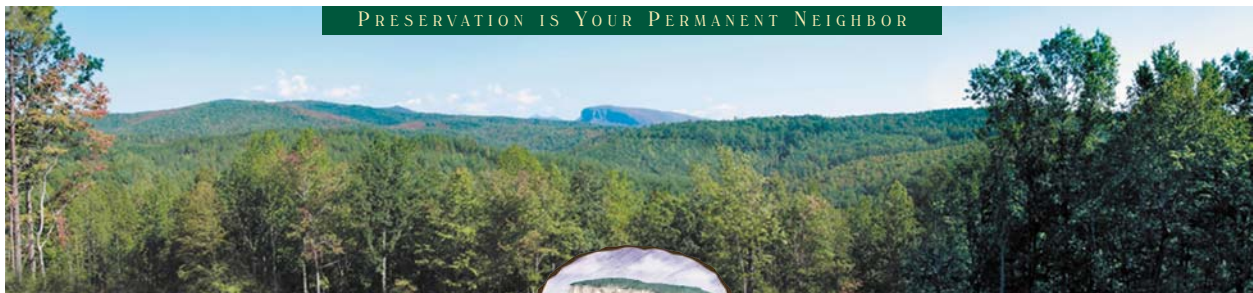


# THE RIDGELINE

See Reverse Side  
for Floor Plans

- 1½ story on an unfinished basement with 3 bedrooms/2½ baths and a loft
- 2,233 heated square feet, 2,634 unheated square feet
- An optional finished basement adds 2nd master suite with bath, family room, and 1,171 heated square feet
- Covered screen patio & open decks
- Covered porches
- 6x12 Logs on main level with a 30 Year Manufacturer Warranty
- Log siding, cedar shake siding or board and batten on second level
- Optional stacked stone on foundation
- Ventless gas fireplace
- Heavy Timber open design
- Porte Co-Chere
- Many interior finishing options are available

Look out the window or step out onto the porch to enjoy Pisgah Preserve's many stunning views ...



PRESERVATION IS YOUR PERMANENT NEIGHBOR

©2008 Pisgah Preserve

The Ridgeline - updated 9/5/08

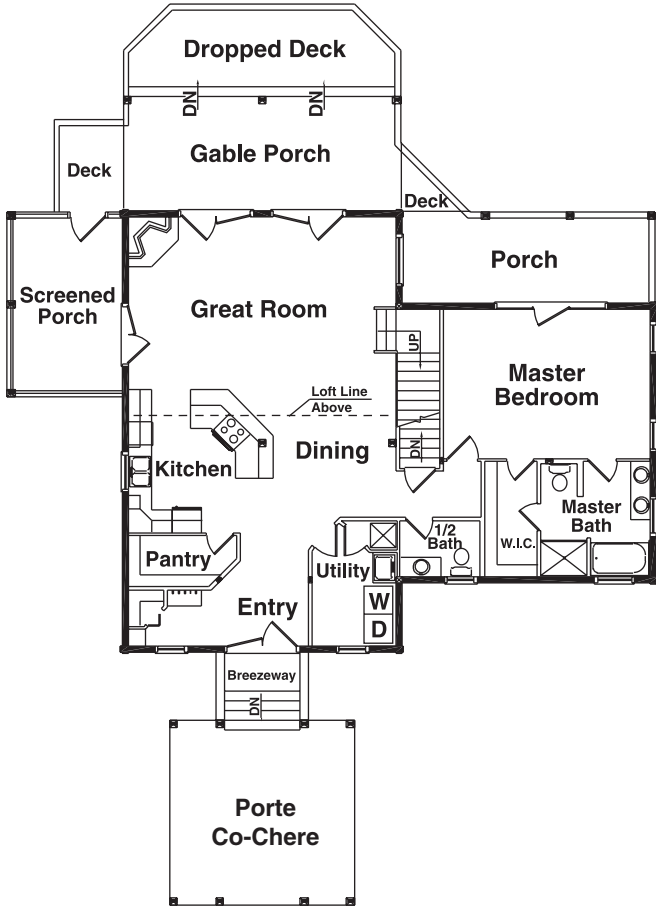


**Pisgah Preserve**  
AT LAKE JAMES

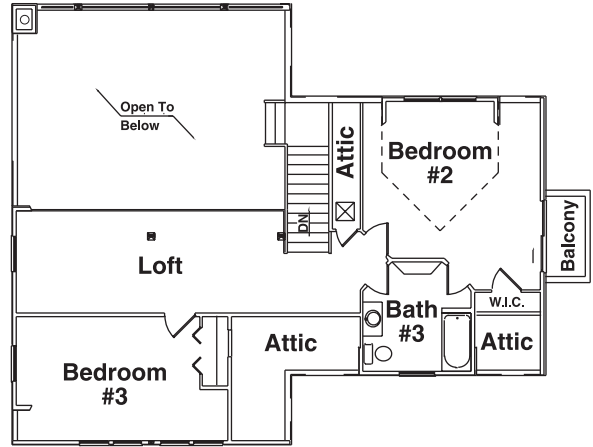
Post Office Box 9148 • Morganton, NC 28680

**828-448-1473** phone • Email: [info@pisgahpreserve.com](mailto:info@pisgahpreserve.com) • [www.pisgahpreserve.com](http://www.pisgahpreserve.com)

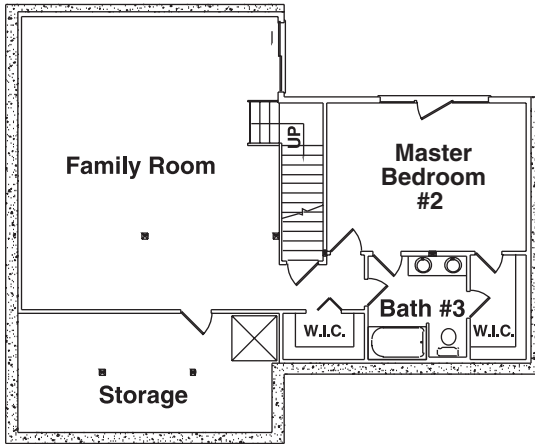
## 1st Floor Plan



## 2nd Floor Plan



## Optional Basement Floor Plan



# THE RIDGELINE

### Square Foot Totals

1st Floor = 1,440 ft<sup>2</sup>

2nd Floor = 793 ft<sup>2</sup>

Optional Basement = 1,171 ft<sup>2</sup>

Total Heated ft<sup>2</sup> = 3,404 ft<sup>2</sup>

Basement = 269 ft<sup>2</sup>

Deck = 242 ft<sup>2</sup>

Porch = 656 ft<sup>2</sup>

Balcony = 40 ft<sup>2</sup>

Total Unheated ft<sup>2</sup> = 1,207 ft<sup>2</sup>